

# Glenarm Place Office, Bank, Retail Condominiums

Denver, Colorado

Owner: St. Charles Town Company

Use: General Office Condominium, Banking, Retail

Area: 71,000 sq. ft.

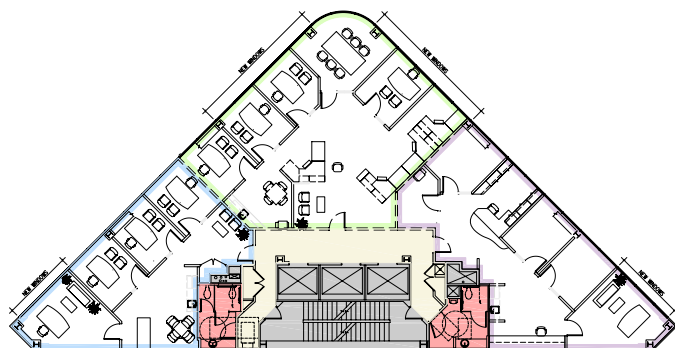
Construction cost: \$ 6,700,00

Services: Architecture, Interior Design

Completion: 2010



1800 Glenarm Place is located on a triangular lot in downtown Denver. The design is a transformation of an existing office building, with a new façade, first floor retail space, and incorporation of public sculpture. The façade is enriched with expansive panes of colored glass whose rhythms were first inspired by Piet Mondrian's compositions. A wind turbine is mounted on the prow, providing renewable power to the building's core systems.



*Design first inspired by Mondrain's compositions has led to eloquent facades rich with colored glass.*

