

RTD Mile High Stadium & Wazee Plaza

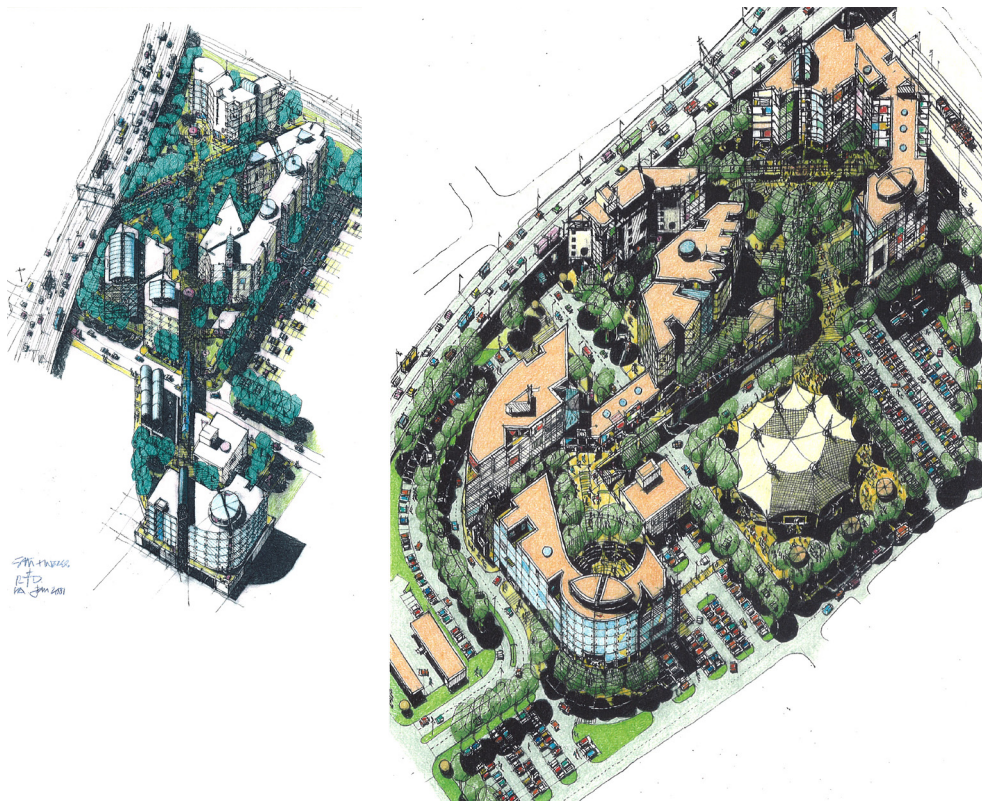
Denver, CO

Owner: Denver's Regional Transportation District

Use: Transit Oriented Development

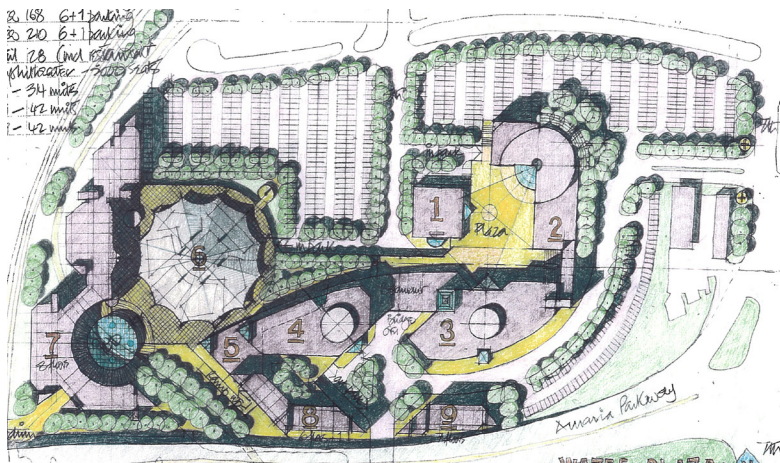
Area: 12 acres including 1 million sf of office and retail space plus housing, a parking structure and a 9,000 seat arena

Completion Date: TBD



The master plan for Wazee Plaza in downtown Denver, adjacent to the Pepsi Center, included 300 units of proposed student housing, an estimated one million square feet of office space in six buildings, 100,00 square feet of retail space, a light rail station, a 500-car parking structure and a 9,000-seat arena. An urban infill project with a transit component, the plan encompassed 12 acres.

* This project was undertaken when Tom Obermeier was CEO of OZ Architecture. Aleksandr Sheykhet served as the Project Manager.



Wazee Plaza is a transit-oriented, urban infill project on twelve acres.

