

King Palm Residential Mixed-Use Tower

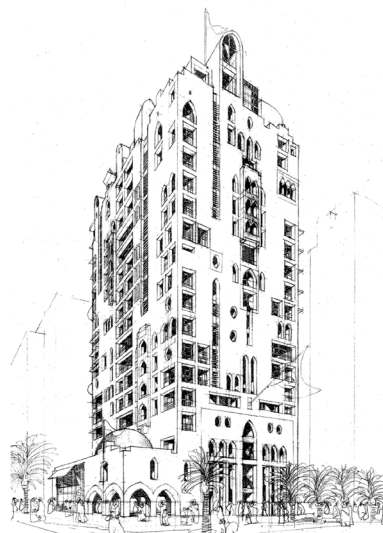
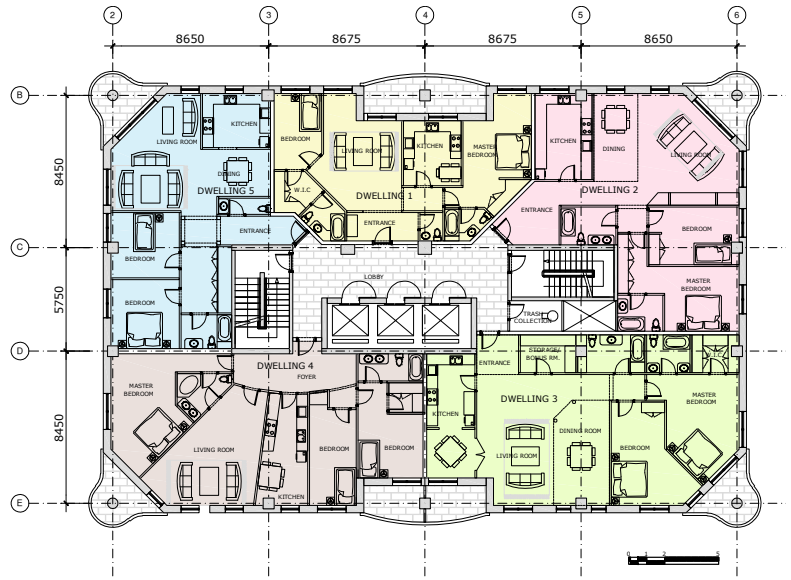
Mohammed Bin Zayed City, United Arab Emirates

Use: Residential Mixed-Use

Completion Date: 2009 Est.



The King Palm tower is designed with a Middle Eastern sensitivity to rhythm and pattern.



ELEVATION STUDY

The project is Studio Obermeier Sheyket's second in the region. It is designed as a part of the development boom of the Greater Abu Dhabi municipality. The tower features a mixture of uses including residential, commercial and retail that provide the substance to contribute to the growing cultural fabric of the rapidly developing community.

